

EVERGREEN BUSINESS PARK

30,060 Sq. Ft.
Industrial/Warehouse
Space For Lease



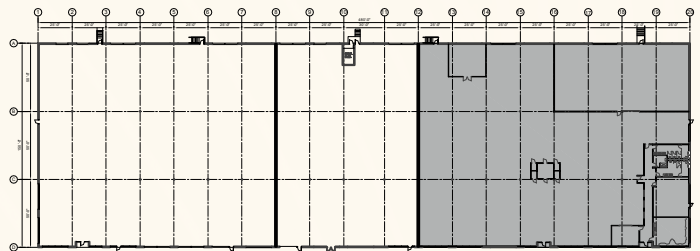
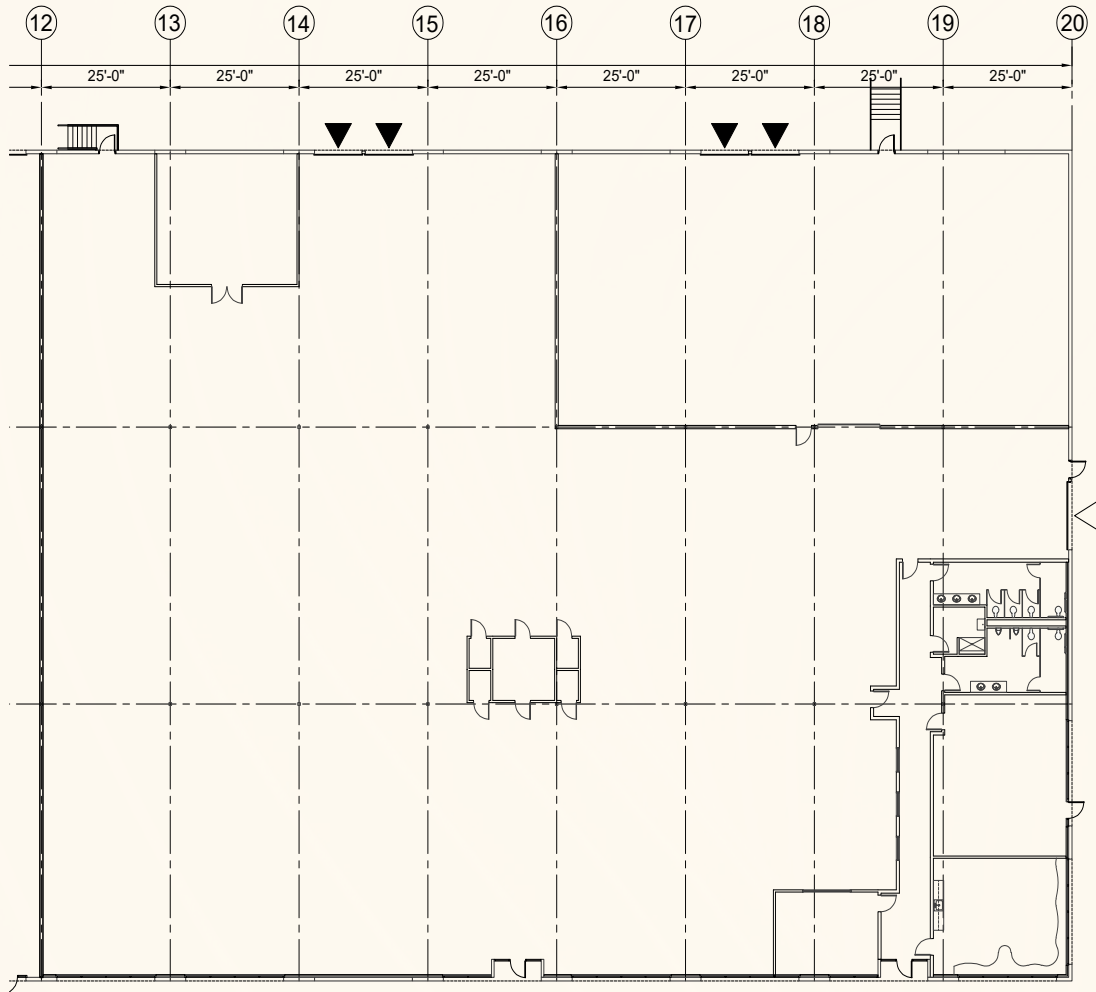
7205 NE Evergreen Parkway, Suite 100, Hillsboro, OR 97124

PACTRUST

Space Plan | 23' Clear Height

PacTRUST

- ▲ Dock Access
- △ Grade Access



Building Plan

Evergreen Business Park
Industrial/Warehouse
Space For Lease

Key Features



30,060 sq. ft shell



2,650 sq. ft. office



4 dock doors
1 grade door

Located in the desirable Hillsboro submarket nearby Intel, Oracle, and Amazon

Less than a mile to US-26 interchange and within 2 miles of a variety of amenities including Orenco Station

Space Available 11.1.26

Lease Rate:
\$0.95/sq. ft. shell
\$1.20/sq. ft. office

NNN Lease



Leasing Contacts

Jake Bigby

jakeb@pactrust.com

Caitlin Knecht

caitlink@pactrust.com

503.624.6300

www.pactrust.com

Owned & Managed by

PacTrust

Evergreen Business Park
Industrial/Warehouse
Space For Lease

7205 NE Evergreen Parkway
Suite 100
Hillsboro, OR 97124

